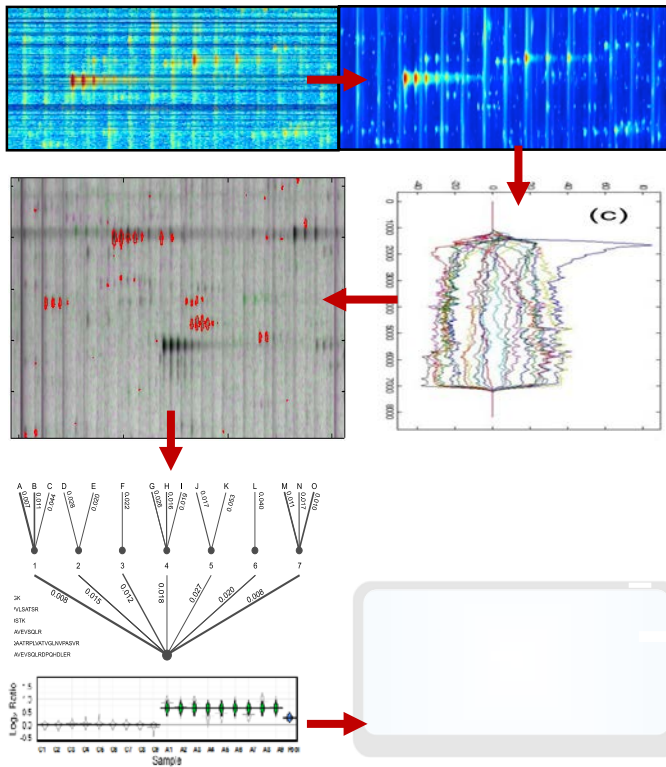


# Applied Data Science for Biomedical and (One) Health applications - **SSCM & SVS**

## Mass Spectrometry Proteomics & Metabolomics

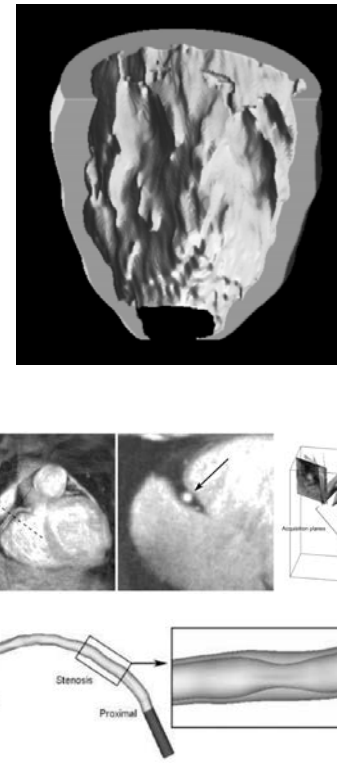


## Data Management, Mining & Surveillance



This section features a network diagram with blue nodes and edges. Below it is a photograph of a cow in a field. The logos for AMR (Antimicrobial Resistance), DataSHIELD (Secure Bioscience Collaboration), Farmvet Systems Ltd (Farming Data, Yielding Insight), and westpoint farm vets are displayed.

## Medical Image Computing



## Sensing & Biosensing

